

How to program BMW 3 series FEM key via CGDI Pro

CGDI PRO can program BMW 3 series FEM key.

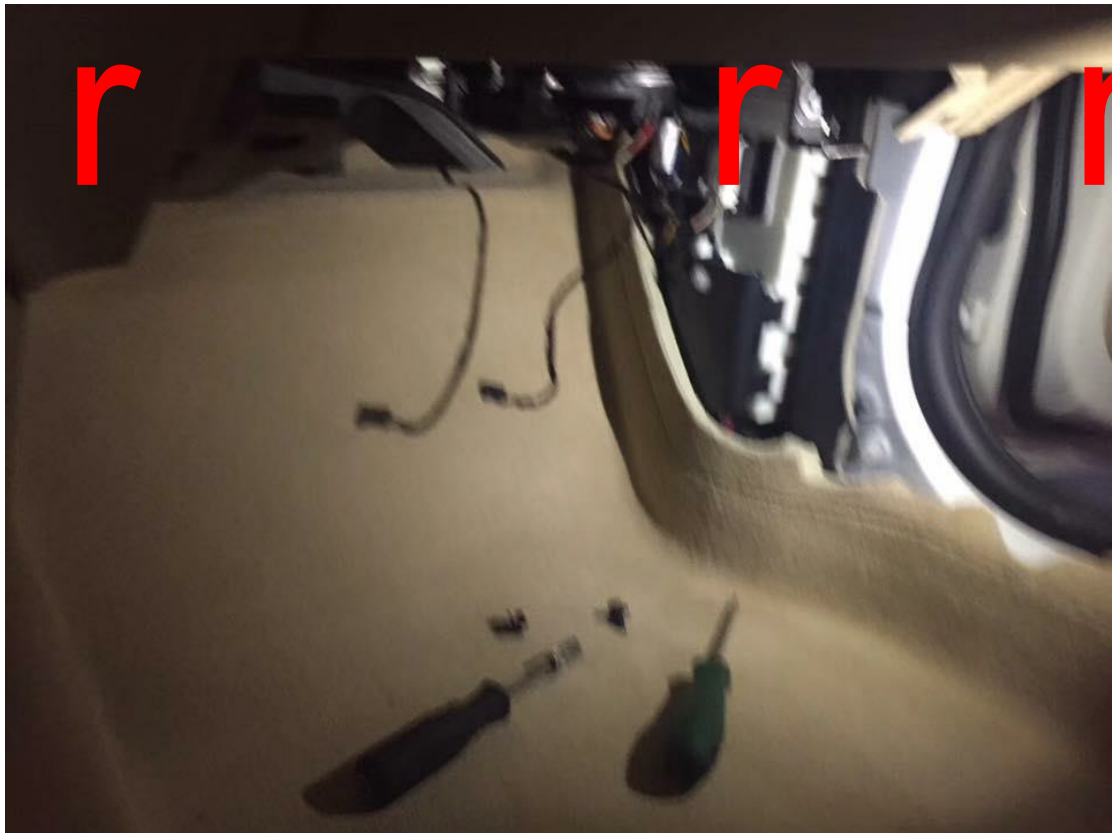
Connect CGDI PRO to the computer and the BMW 3 series



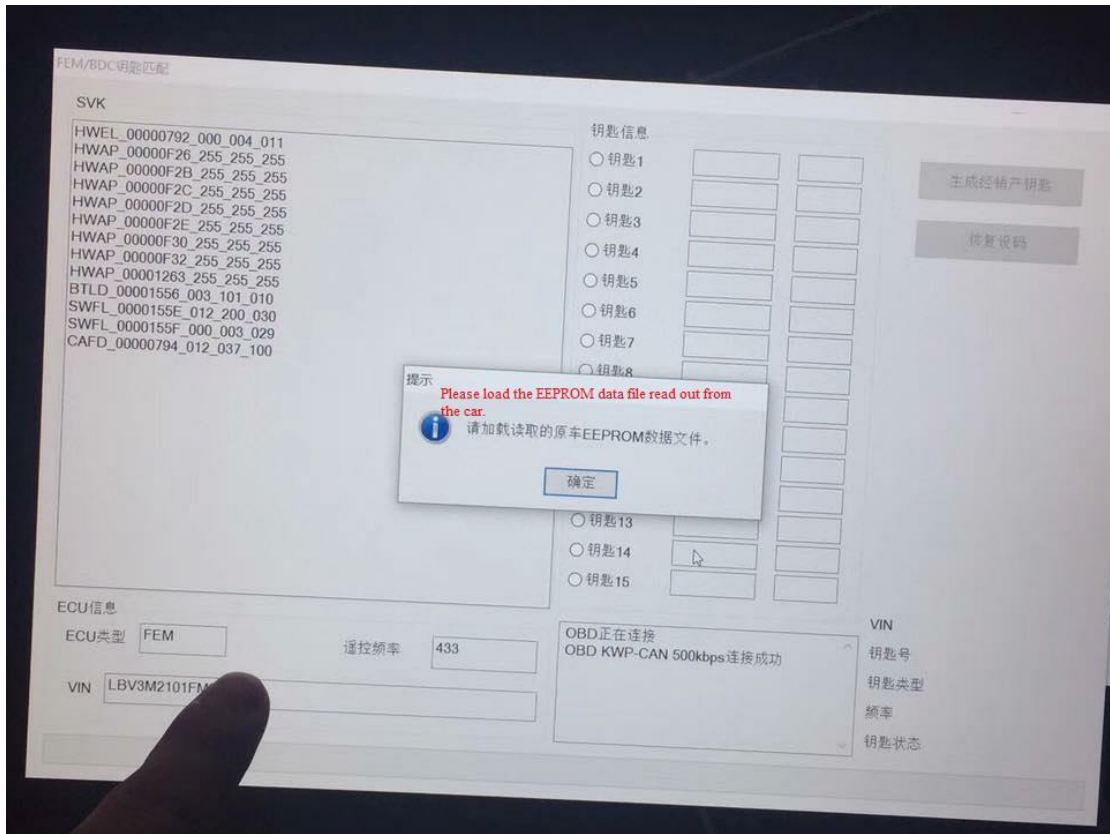
This is BMW F series 433MHZ blade key in black.



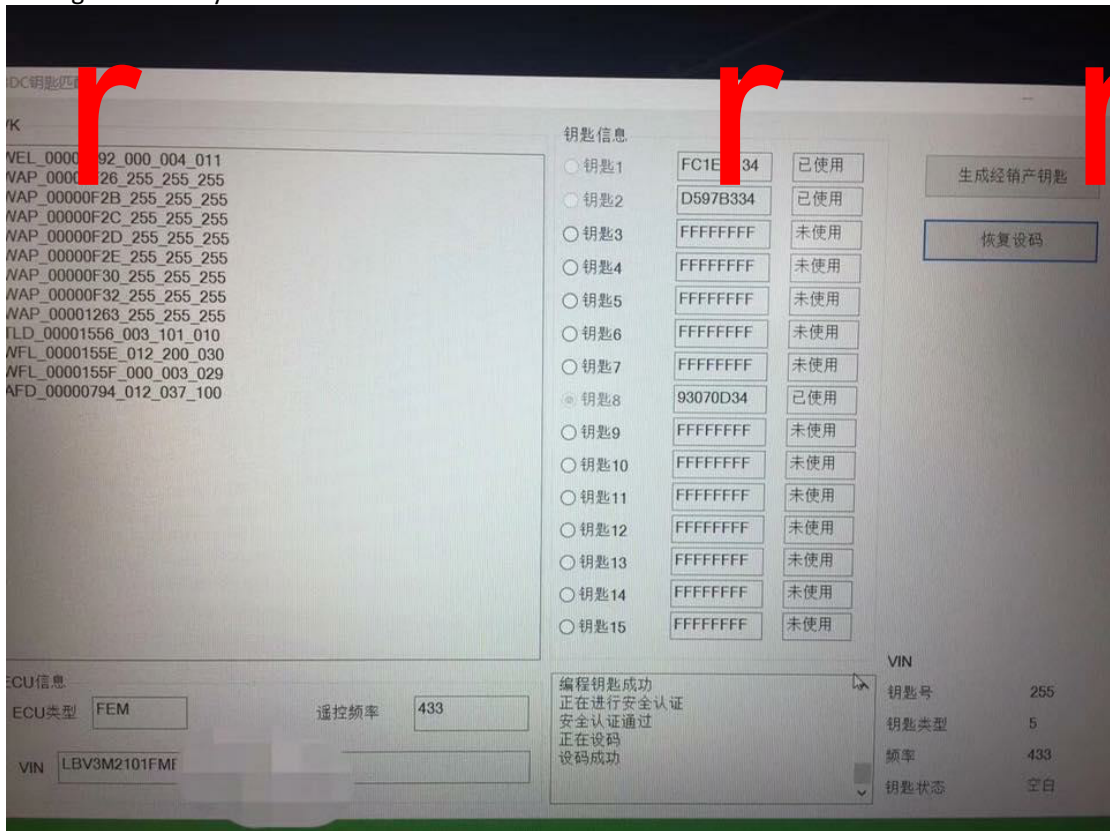
Remove the FEM module from the car.

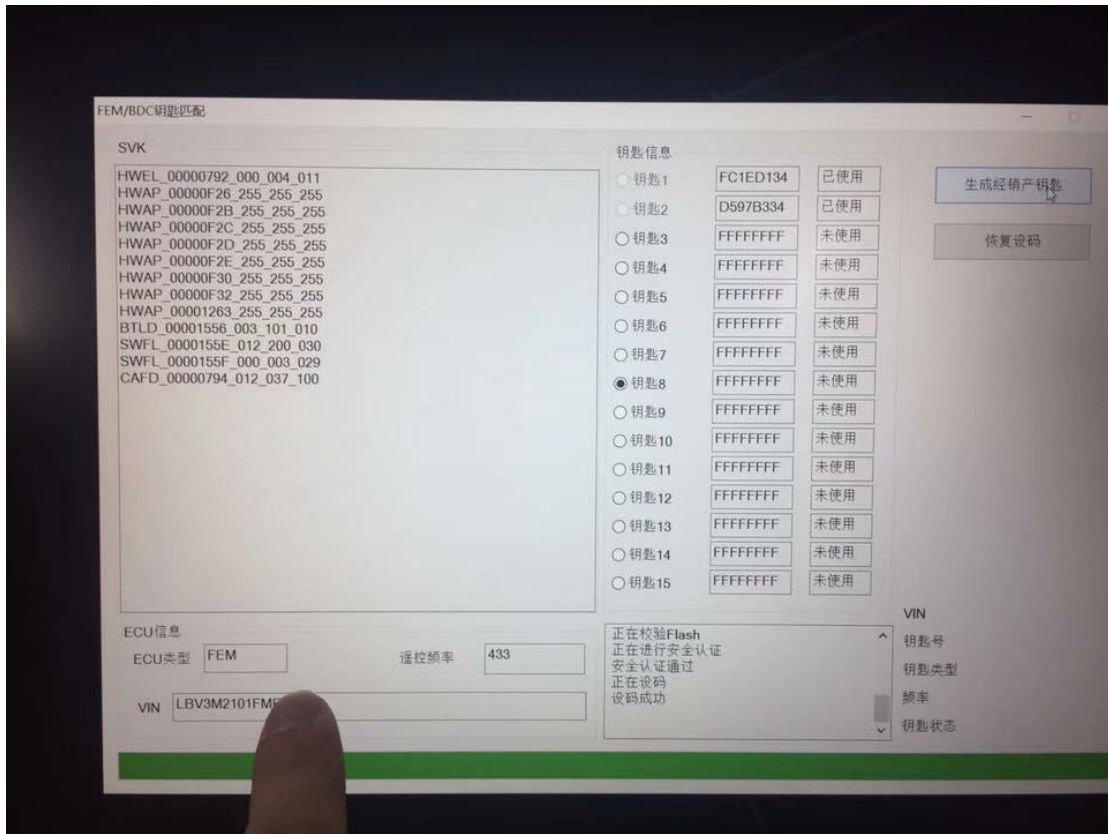


Please load the EEPROM data file read out from the car.

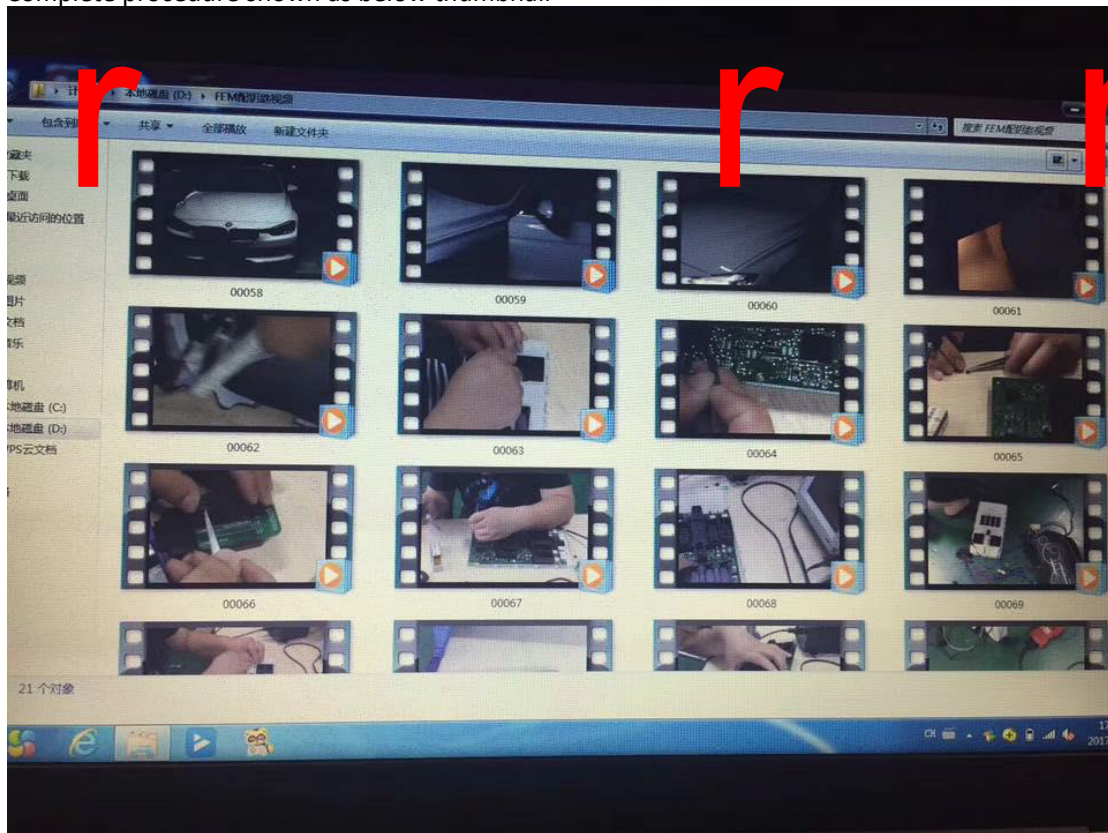


Coding successfully





Complete procedure shown as below thumbnail



To be continued...