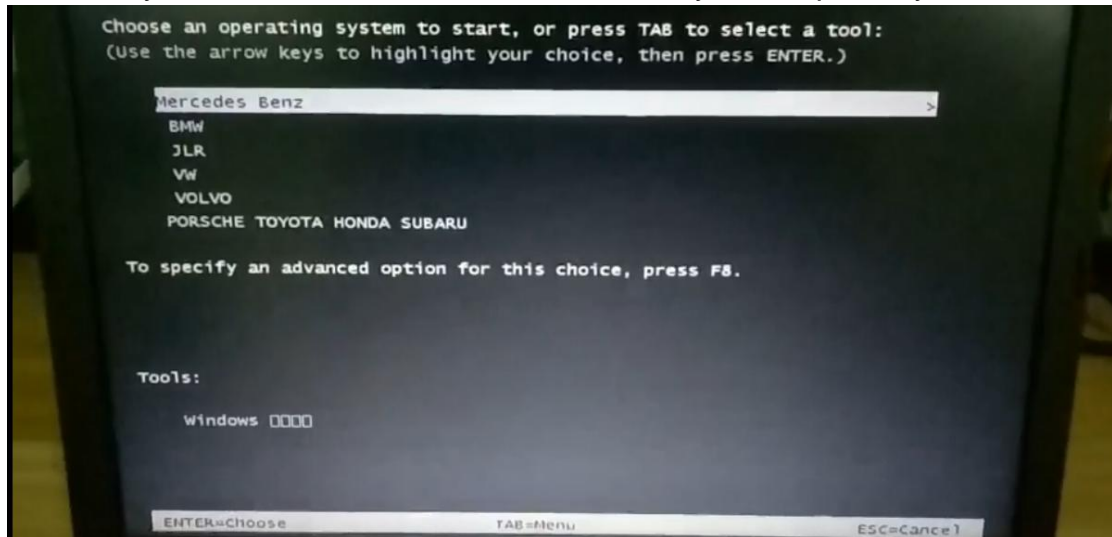


How to Use and Start Software for VXDIAG VCX Plus with 2TB HDD?

1. Insert 2TB HDD into an empty laptop, and start the laptop.
2. When turn to the page of software brand list, please choose one car software brand to enter windows.

Note: Only can enter each Software brand one by one separately.

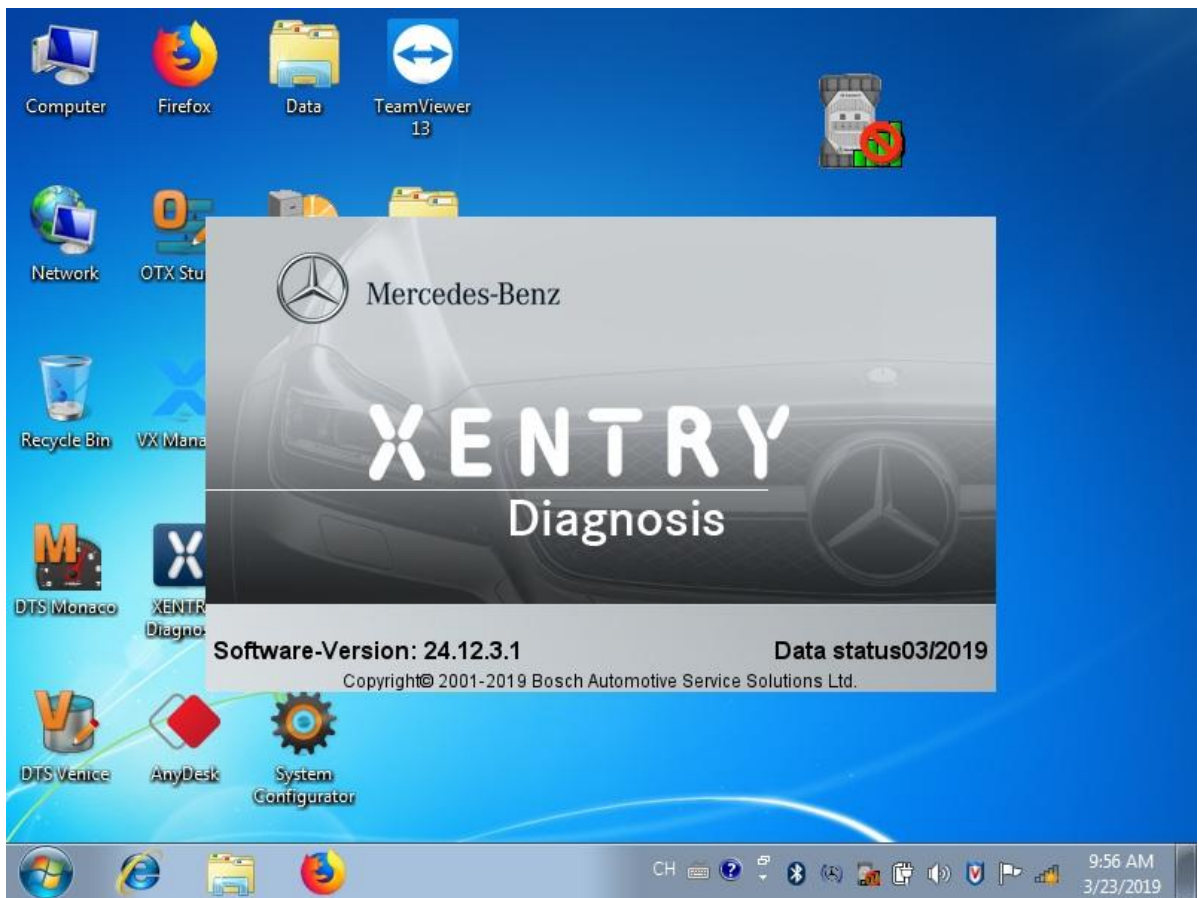


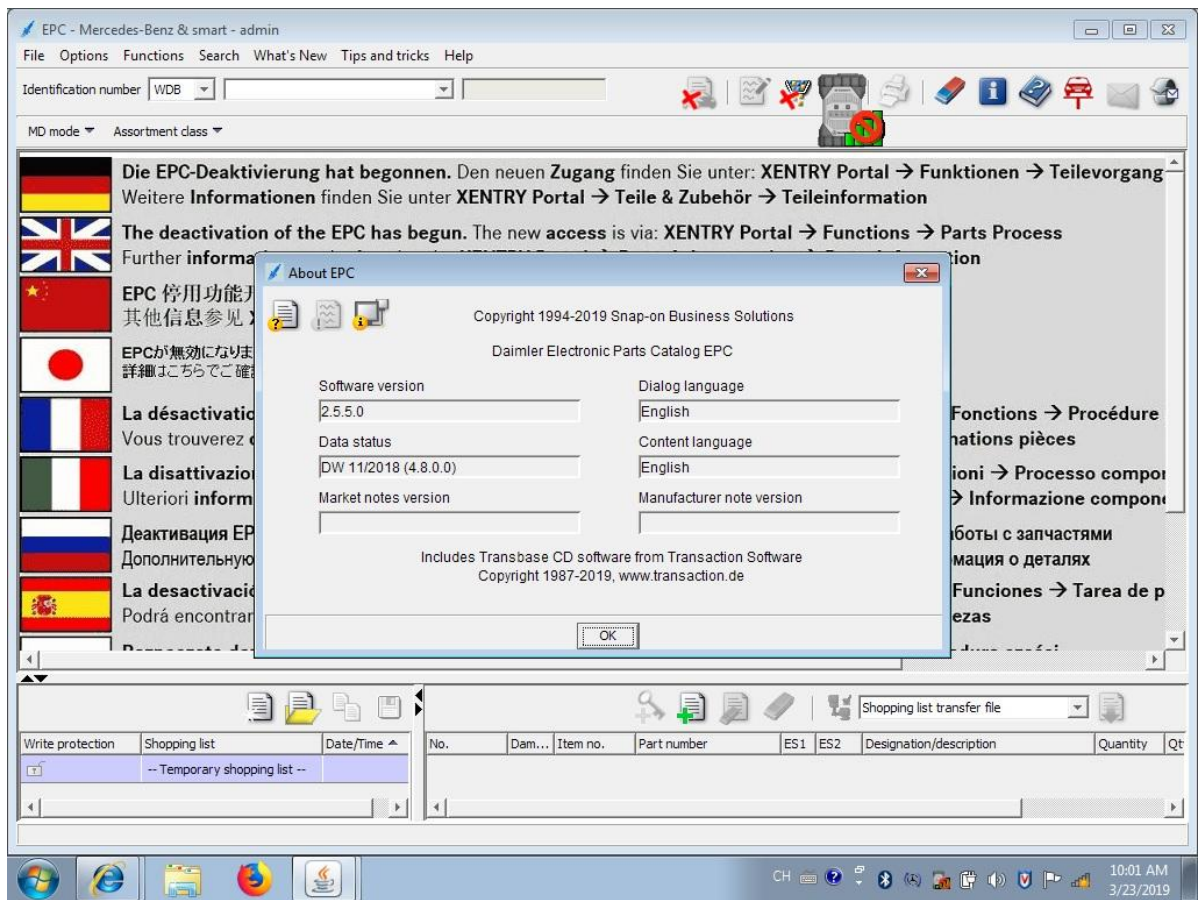
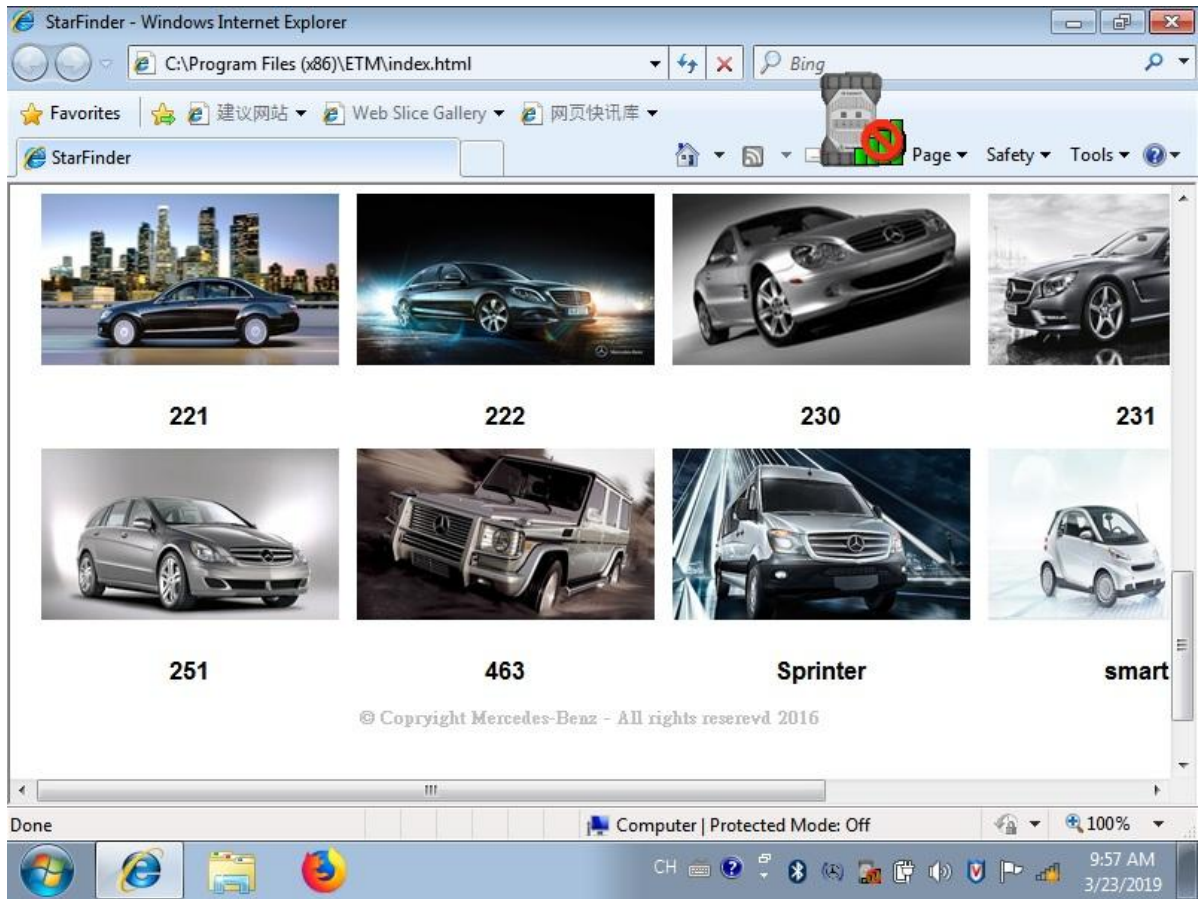
Here we have video to show the process.

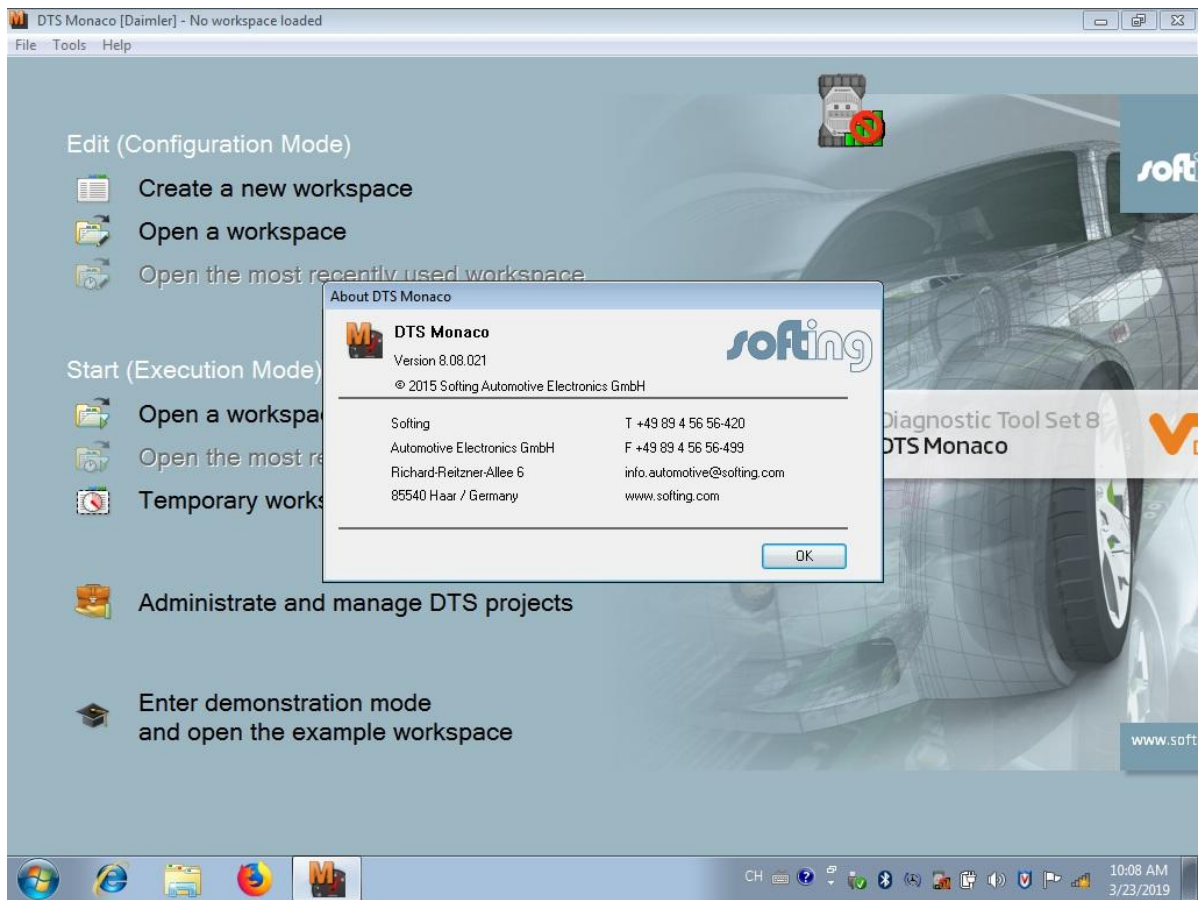
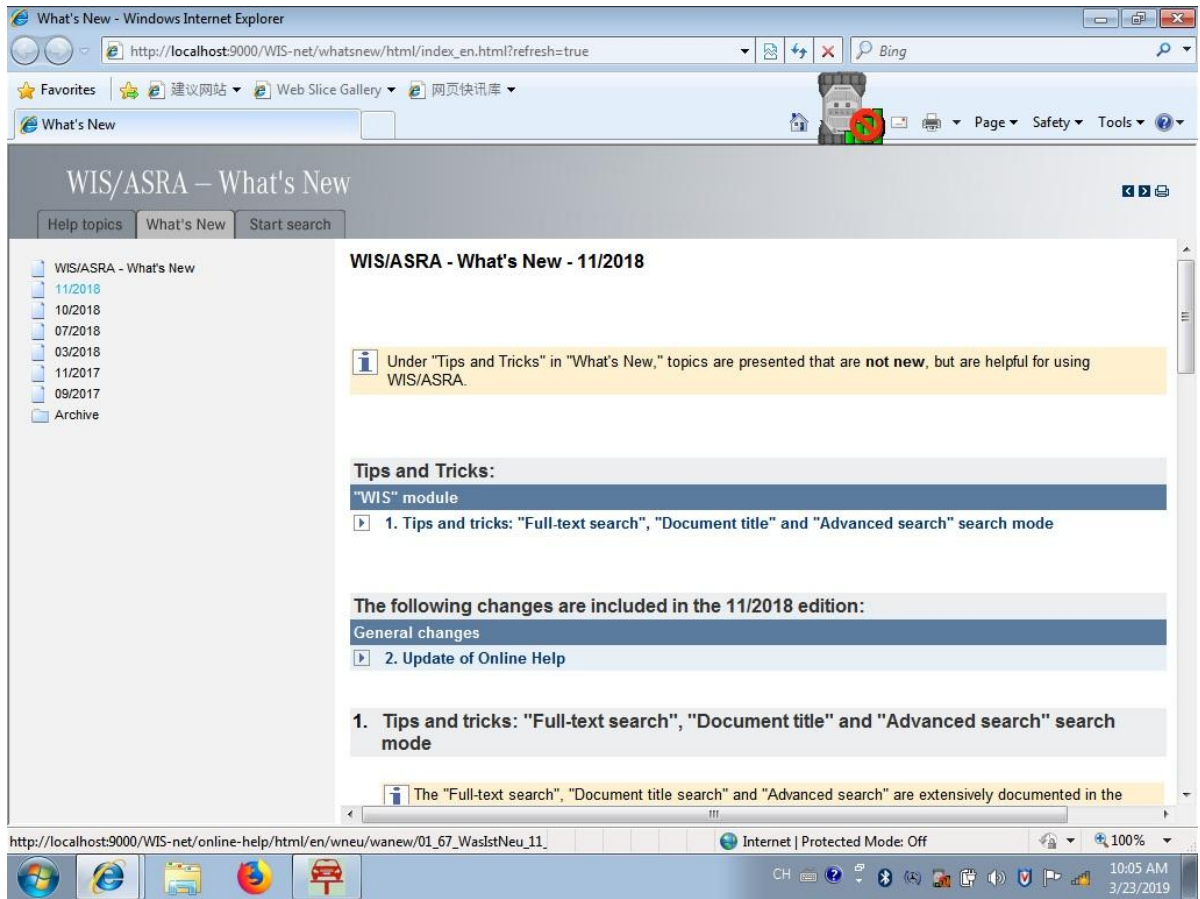
<https://youtu.be/mGIK4YdZRuI>

3. Here are different photos to show desktop after enter different brand software windows.

3.1. Enter Mercedes Benz Window, Desktop & Software Display (2019.3 Version, Keep Updating)

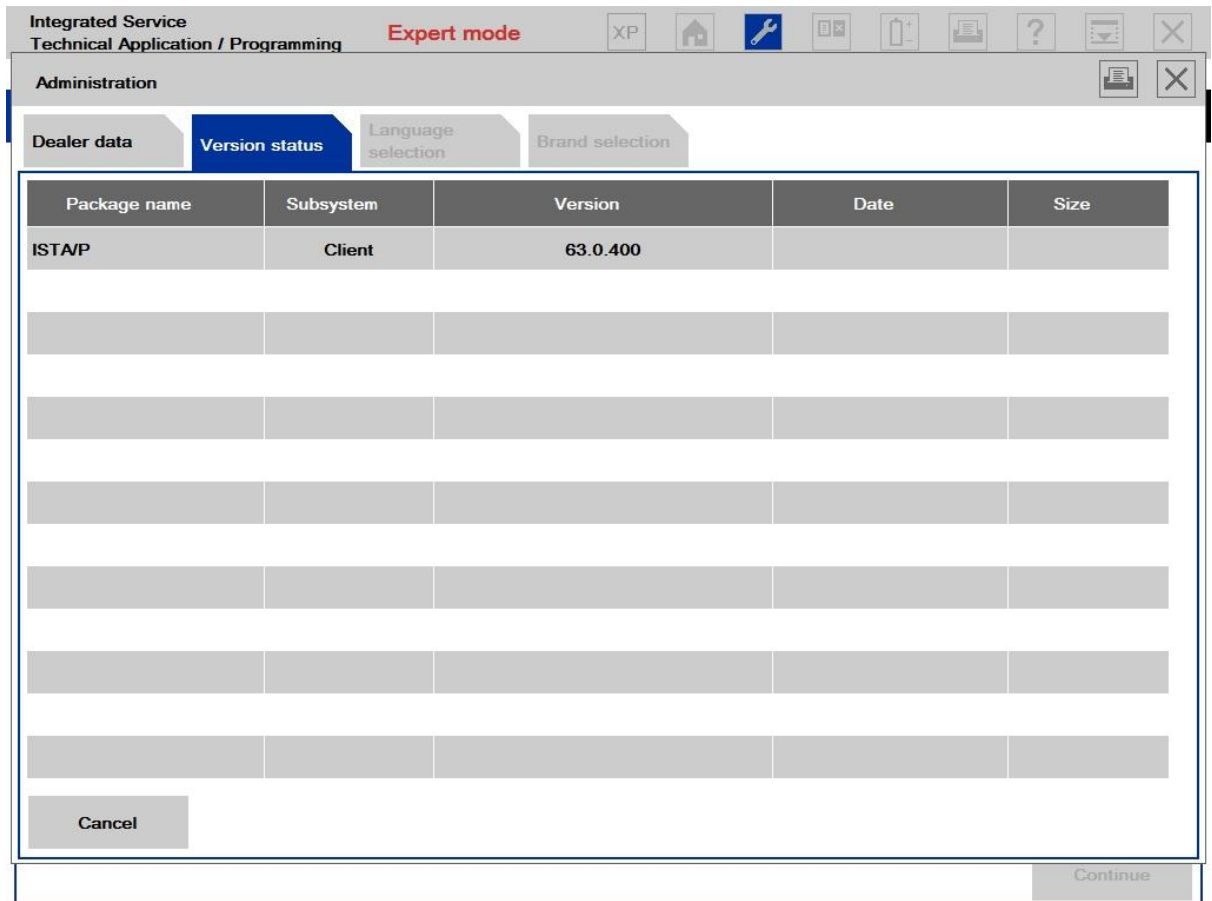




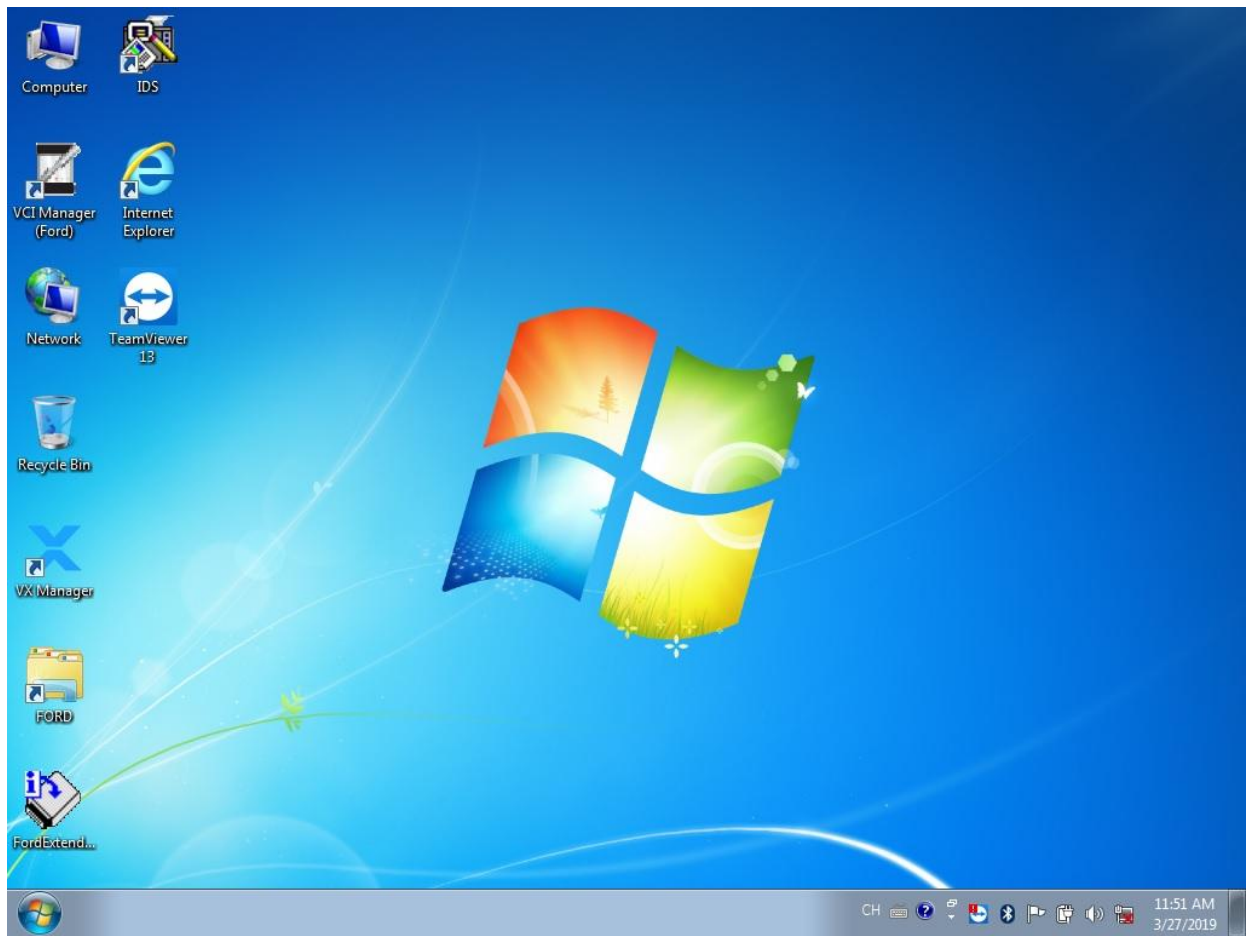


3.2. Enter BMW Window, Desktop & Software Diplay (BMW 2019.3, ISTA-D
4.14.14 ISTA-P 3.65.2.000, Keep Updating)

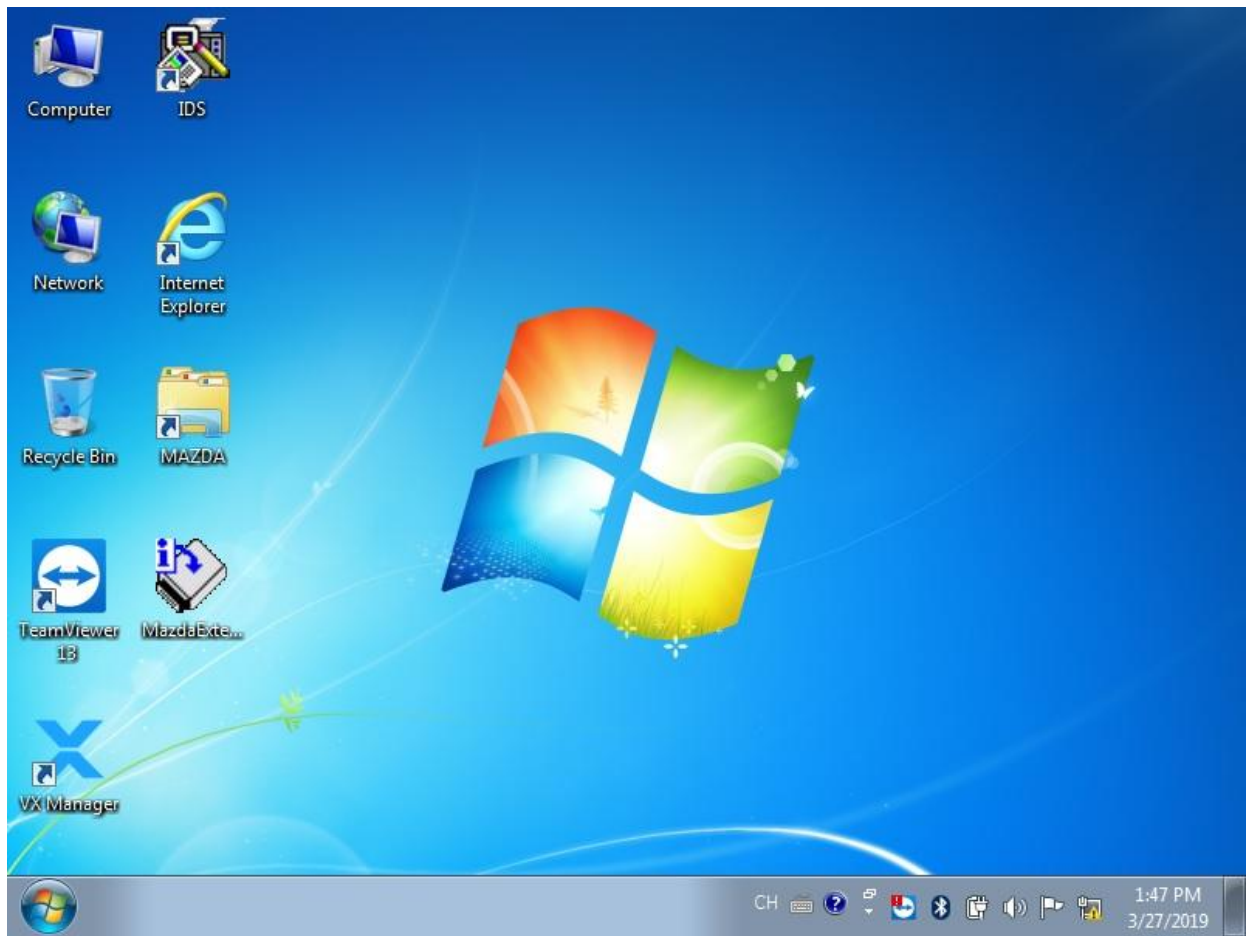




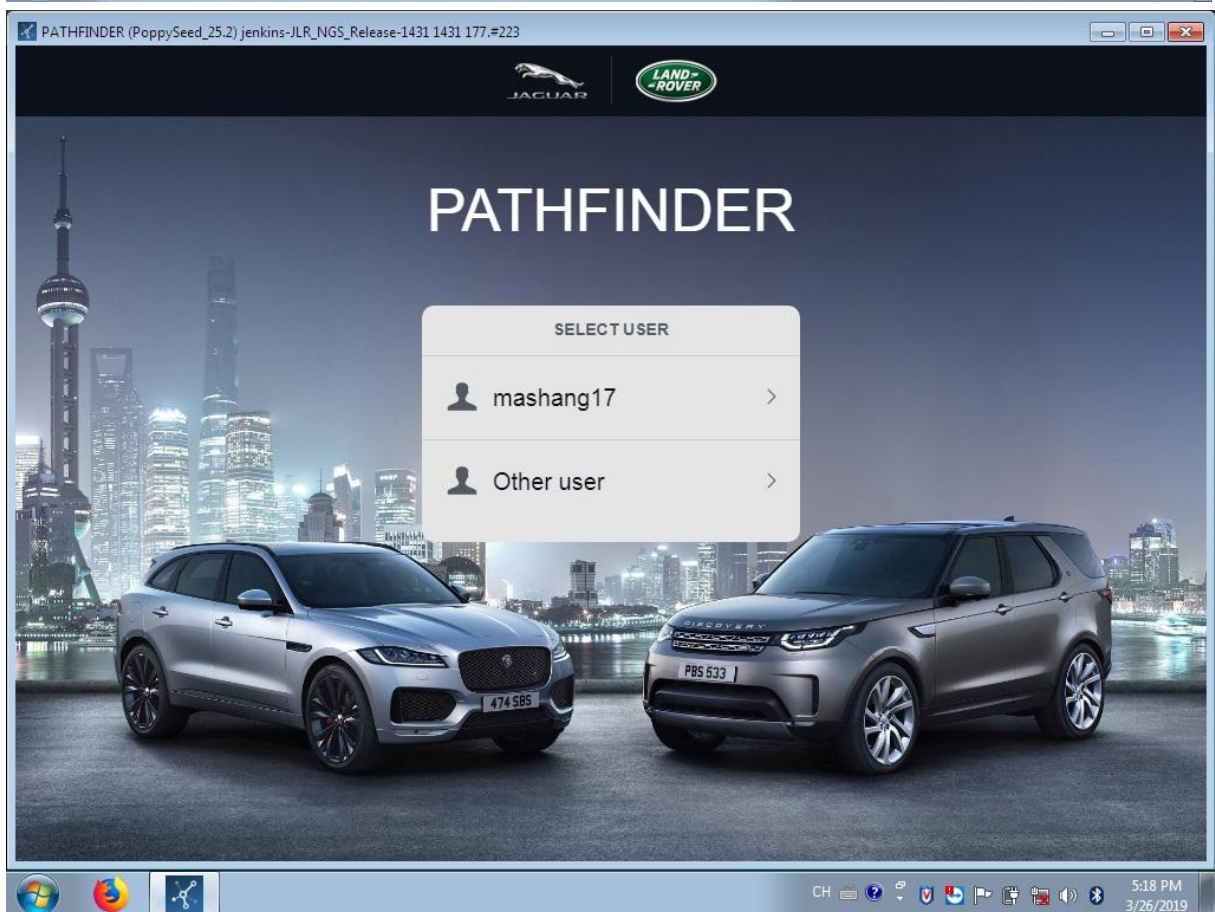
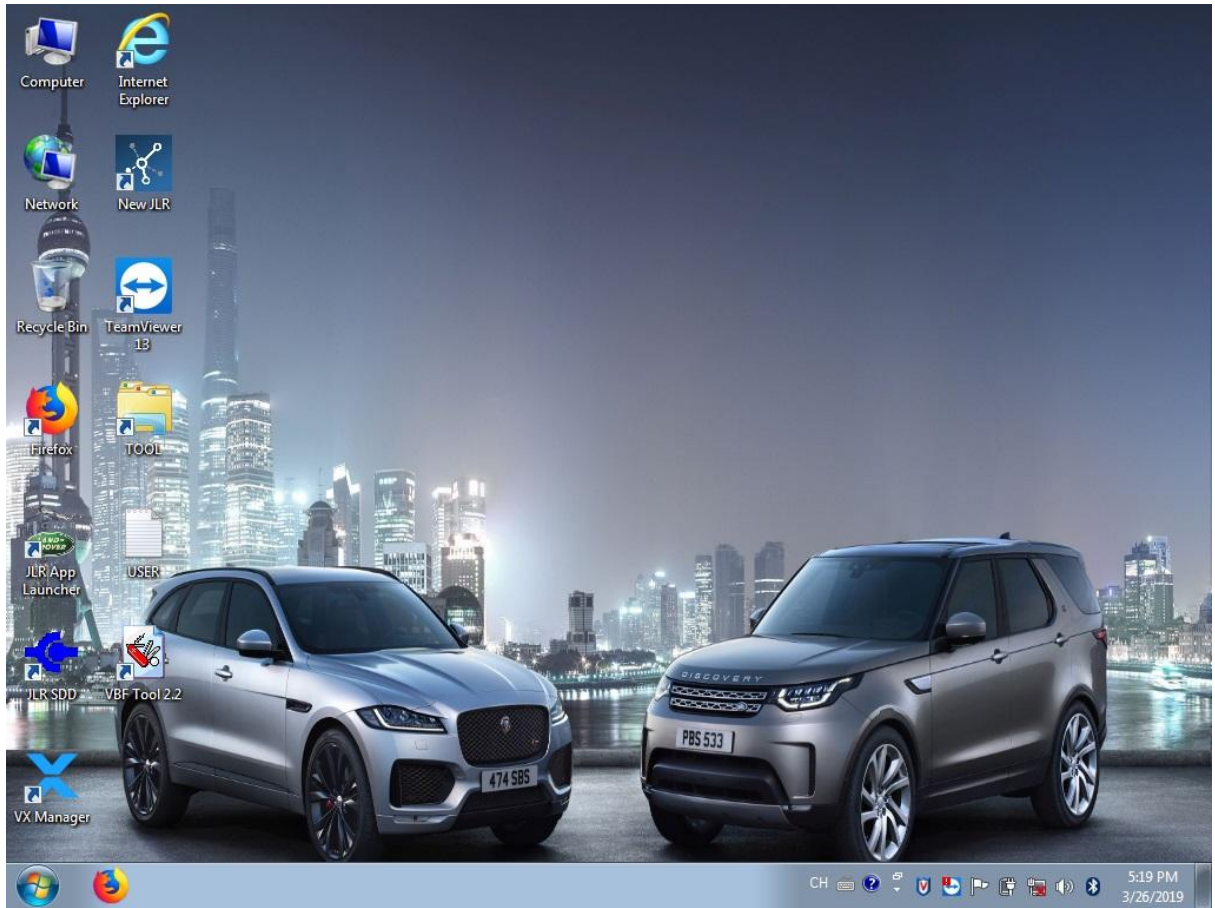
3.3. Enter Ford Window, Desktop, Ford IDS V112, Keep Updating



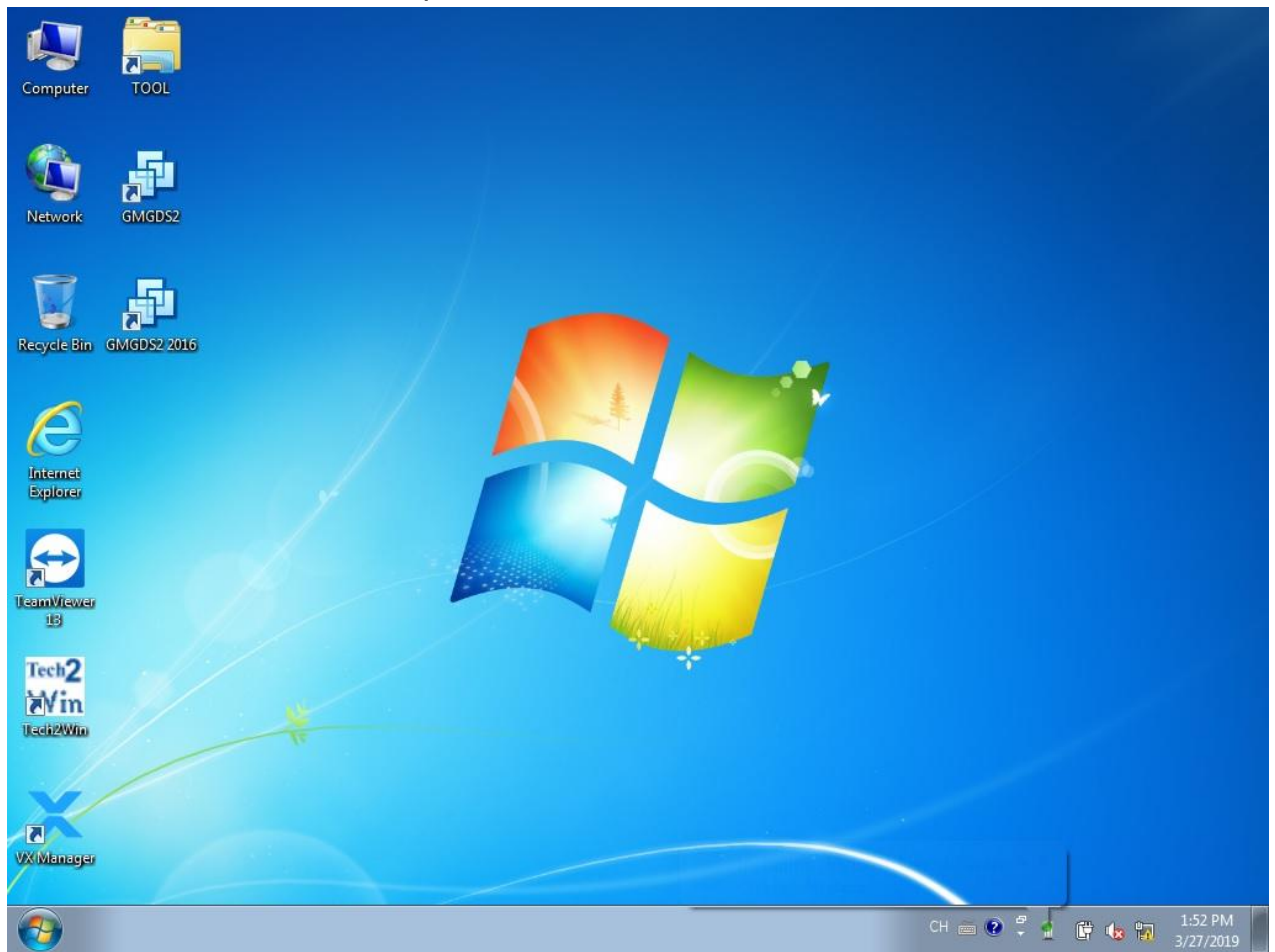
3.4 Enter Mazda Window, Desktop, Mazda IDS V112, Keep Updating



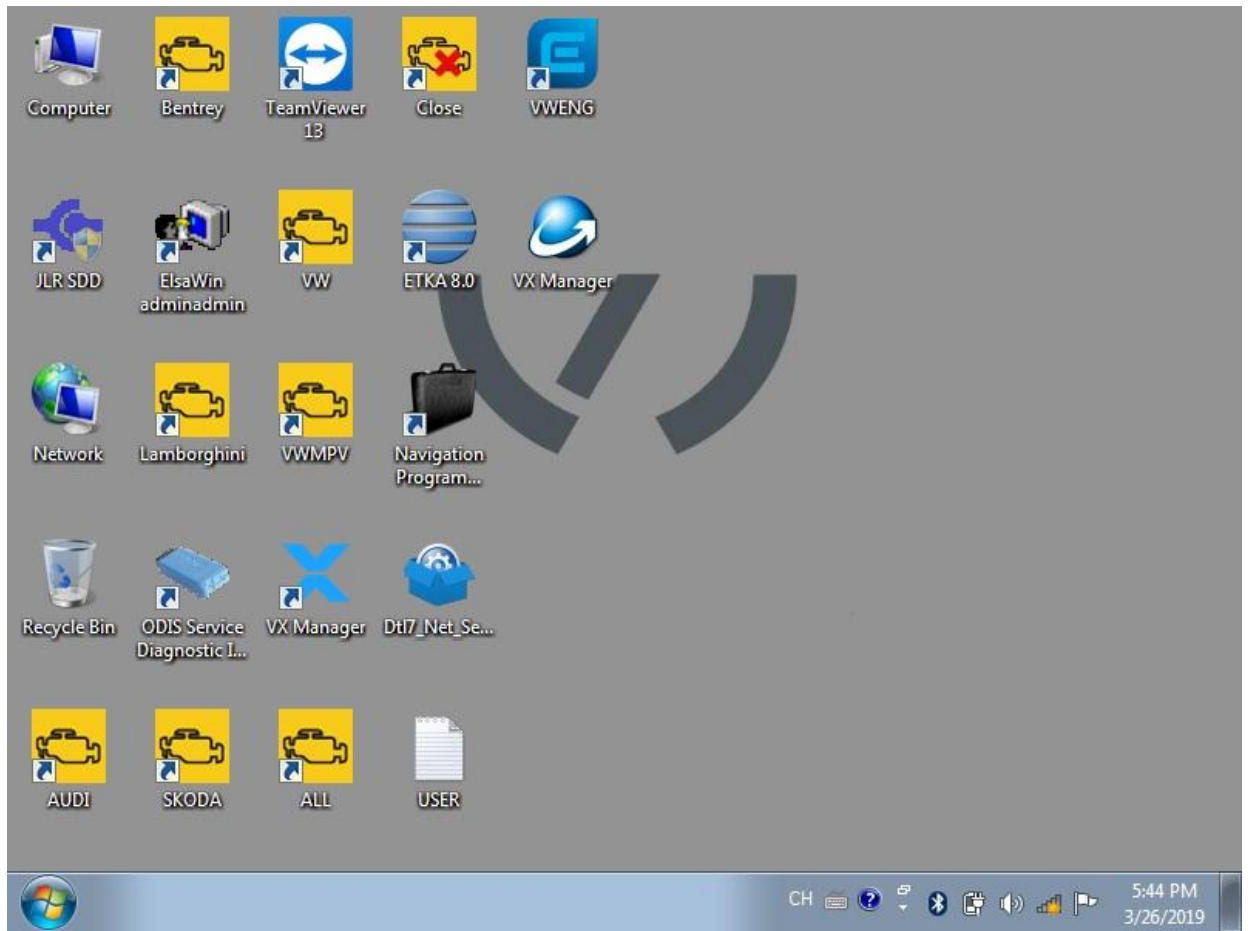
3.5 Enter JLR window, desktop, JLR V156 Keep Updating



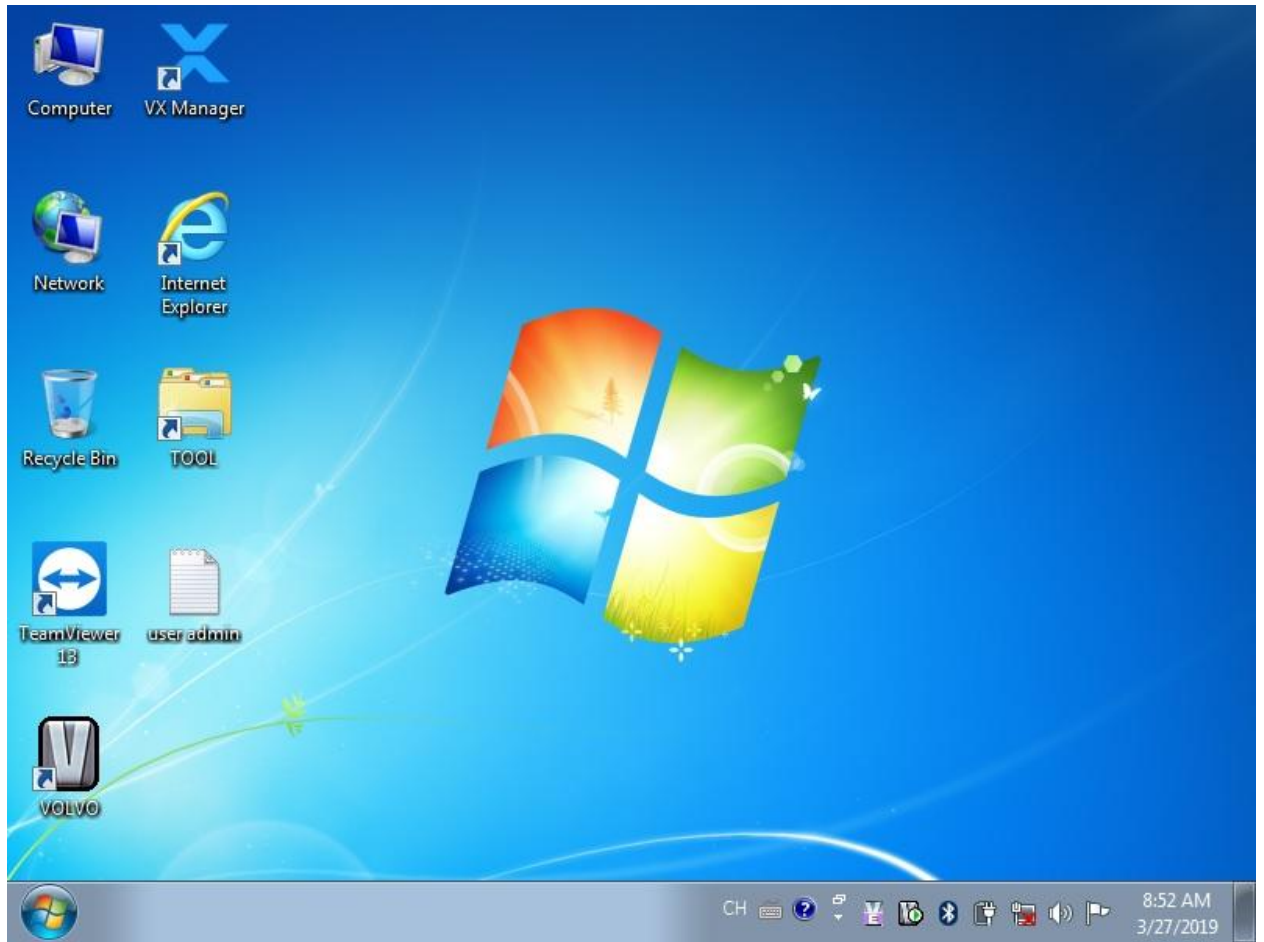
3.6 Enter GM window, Desktop, GDS2 2018, tech2win 16.02.24



3.7 Enter VW window, Desktop, ODIS 4.41, Keep Updating



3.8 Enter Volvo Window, Desktop, VIDA 2014D




3.9 Enter Honda Porsche Toyota Subaru Window, Desktop




PORSCHE



Porsche PIWIS V18.1



PORSCHE



- DIAGNOSTICS
- FAULT FINDING
- WIRING DIAGRAMS
- MEASURING EQUIPMENT
- INFORMATION
- DATA ADMINISTRATION
- SETTINGS
- TOOLS

Validity of imprint: 30607 Days
 Installed release: 18.100.000
 Power supply: Cable
 Network connection: None

Time: 09:31
 Date: 27 Mar 2019

© 2014 Dr. Ing. h.c. F. Porsche AG.



Subaru SSM3 2018.4

